

**Analyte: Perphenazine**

**Results**

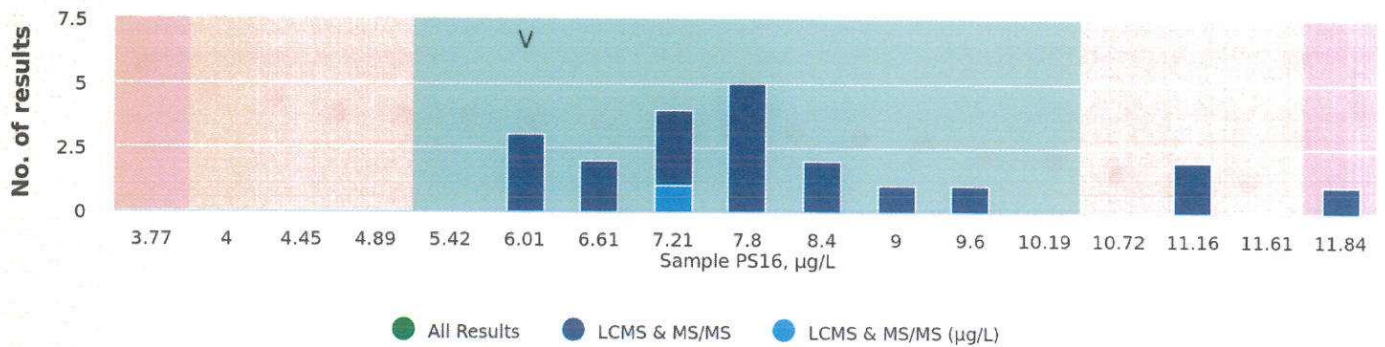
Sample	Method	Result	Unit	z/z' score
PS16	LCMS & MS/MS	6.11	µg/L	-1.26

**Data Statistics**

Sample	PS16
Number of Results	21
Number of Excluded Results	1
Mean	7.87
Median	7.81
Standard Deviation	1.486
Robust SD	1.146

**Performance Statistics**

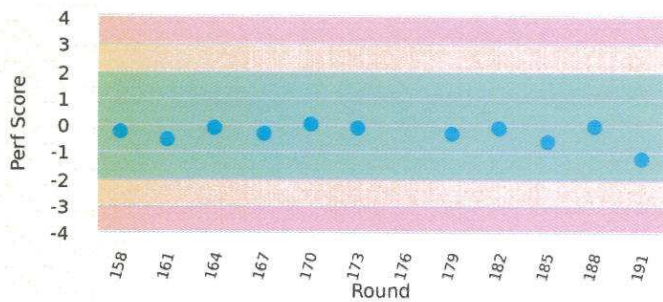
Sample	PS16
Assigned Value	7.81
Assigned Value Derived By	All data
Uncertainty of Assigned Value	0.32
SDPA	1.34
Satisfactory Range	5.12 to 10.49
Satisfactory z/z score	85.7%
Questionable z/z score	9.5%
Unsatisfactory z/z score	4.8%



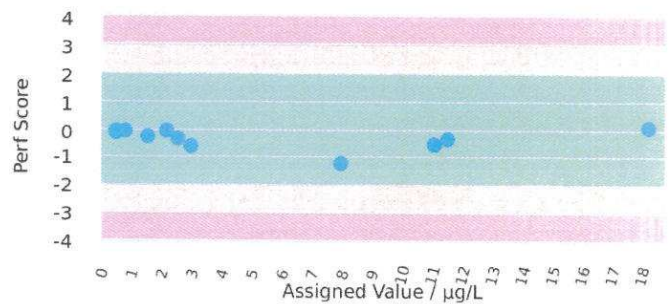
**Last 9 Performance Scores**

Sample PS16 - Round	TM167	TM170	TM173	TM176	TM179	TM182	TM185	TM188	TM191
LCMS & MS/MS	-0.94	0.02	-0.13	ZS	-0.37	-0.13	-0.65	-0.08	-1.26

< or > = Less/Greater than result returned, no assessment given. ZS = Zero Spiked Sample, no assessment given. Blank = No result submitted



● LCMS & MS/MS



● LCMS & MS/MS